



Evelyn Oftedahl

March 21, 1928 - October 17, 2025

The funeral service celebrating the life of Evelyn Oftedahl of Sauk Center and formerly of Eagle Bend, will be held at 11:00a.m. on Friday, October 24, at the Faith Lutheran Church in Eagle Bend with Pastor Allen Mortenson presiding. Visitation will be at the church on Friday from 9:30a.m. until the time of the service. Burial will be at the Hope Lutheran Cemetery in Eagle Bend.

~~~~~

You are invited to watch the service via live-stream by going to Schuller Family Funeral Homes' Facebook Page or YouTube Page

~~~~~

Evelyn, age 97, passed away on October 17, 2025, at her home in Sauk Centre, MN, with tender care provided by CentraCare Hospice.

Evelyn was born on March 21, 1928 in Amery, Wisconsin to Nels and Hedvig (Lindberg) Anderson. Her family moved to Eagle Bend when she was 10 years old, traveling in a Model A car. They moved to the Lindberg farm which is still to this day an Oftedahl farm. She attended country school and then graduated from Eagle Bend High School in 1945. She went to Minneapolis to business school and worked at Pillsbury Mills for 2 ½ years.

Evelyn returned to Eagle Bend and married Halvor Oftedahl, Jr on October 16, 1948 at Petri Lutheran Church. She was a farm wife who drove tractor, milked cows, unloaded hay bales and had a large garden which provided for

her family. In 1980, they built a home in Eagle Bend, and she loved her garden, flower beds and had more time for quilting. She made many quilts for the church missions and graduates. Her children, grandchildren and great-grandchildren were blessed with baby, graduation and wedding quilts.

Her faith was very important to her. She was very active in her church, being a member of WELCA, member of the Faith church council and always there to work in the kitchen. She was given the Mary Magdalene Award from the Women of the ELCA for her work in the church. She was a member of a Homemakers group, enjoyed watching the Minnesota Twins (until they were too far behind), reading, doing puzzles, traveling and camping with her family. She was glad she and Jr. were able to travel during their years in town. Bus trips, trips with her children and camping trips were special to her. They enjoyed taking grandchildren and great grandchildren on fishing trips. If the fish were not biting after 10 minutes, the boat had to move!

In February 2023, Evelyn moved to Sauk Centre to live with her daughter. Her golf cart came with her, and she enjoyed her rides around her new neighborhood, making new friends.

Evelyn was preceded in death by her husband, Halvor Jr., parents Nels and Hedvig Anderson, brother Elmer, sister Delores, and granddaughters Brandiss Oftedahl in 1992 and Jackie Kolstad in 2007.

She is survived by her children Daniel (Sherry) of Eagle Bend, Valerie of Sauk Centre, Bruce (Linda) of Long Prairie, Myron of Glencoe, and Philip (Margaret Mary) of Crystal; grandchildren Brent (Amy) Oftedahl, Jennifer (Tim) Rohloff, Stephanie (Matt Cummings) Oftedahl, and Jonathan Oftedahl; great-grandchildren Tyler, Brandon and Lane Oftedahl, Lorisa Carkhuff, Brandi DeClercq, Koby Rohloff, Jordan Oftedahl, and Dacotah Kolstad. She is survived by her additional grandchildren, international Foreign Exchange

students: Janek Albinsky (Germany), Tessa Eriksson (Sweden), Camilla Eriksen (Norway), Sanne Peterson (Denmark), and Sorachat (Ice) Rattanjitti (Thailand). It was with great joy when her family grew to include 8 great-great grandchildren (6 of them her “babies” aged 4 and under) Alayna, Stella, Raelynn, Mariah, Brooklyn, Lydia, Parker, and Tyler Jr. Grandma loved to hold her babies. She is also survived by sisters-in-law Darlene Oftedahl and Karen (Dennis) Beach. A special thank you to “adopted daughter” Donna who helped care for Evelyn the last 2 ½ years.

She was a special mother, grandmother, aunt and friend to many. Evelyn has been blessed in many ways as she has blessed so many.

Cemetery Details

Hope Lutheran Cemetery

15115 County Road 22
Eagle Bend, MN 56446

Previous Events

Visitation

OCT **24**. 9:30 AM - 11:00 AM (CT)

Faith Lutheran Church - Eagle Bend
300 Main St. W.
Eagle Bend, MN 56446

Service

OCT **24**. 11:00 AM (CT)

Faith Lutheran Church - Eagle Bend
300 Main St. W.
Eagle Bend, MN 56446

Tribute Wall



“ *Schuller Family Funeral Homes created a Tribute Video in memory of Evelyn Oftedahl*



Schuller Family Funeral Homes - October 21, 2025 at 07:26 PM

BO

“ *I always hear such wonderful stories passed down through the family about great aunt Evelyn. I got to meet her once and she was a lovely human being.*

Brittney Oftedahl - January 13 at 04:51 PM

AO

“ *I got to know Evelyn in the 1990's when she helped me gather information about the Christopher Oftedahl family for the Oftedahl Family History book that I wrote. We stayed in contact over the years. I would drop in on her unannounced in Eagle Bend on my way up to the Bagley HS Reunion. Every 5 years I would knock on her door and surprise her around the 4th of July. It was always great to see her and she was always delighted to see me again. Arlan Oftedahl Atlanta GA*

Arlan Oftedahl - December 10, 2025 at 06:41 PM

LP

“ *High school friends - wonderful memories of school days - recently we reconnected. Lily Ehnes Pockrandt*

Lily Pockrandt - October 30, 2025 at 02:14 PM

GC

“ *We were at the ELCS Northwestern Minnesota Synod conventions.*

Gladys Hansen Chase - October 22, 2025 at 05:37 PM

GC

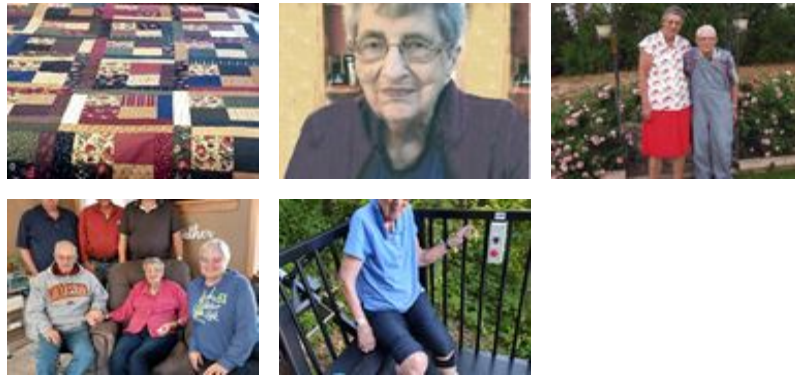
“ *I met Evelyn when we were delegates to the syndicate coverntion for several years. I really enjoyed her*



Gladys Hansen Chase - October 22, 2025 at 05:35 PM



“ *47 files added to the album LifeTributes*



Schuller Family Funeral Homes - October 21, 2025 at 07:21 PM

SH

“ Our sincere condolences to the family of Evelyn their wonderful mother. We have enjoyed getting to know her in the two plus years she came to Daybreak Place. Such a very pleasant lady. We will miss her and seeing her with her golf cart.
Simon and Mary Hellermann



Simon Hellermann - October 20, 2025 at 05:54 PM

SH

“ SHE WAS A ROLE MODEL AND A VERY SPECIAL PERSON.

Sharon - October 19, 2025 at 11:26 PM

JE

“ Judy Erdahl lit a candle in memory of Evelyn Oftedahl



Judy Erdahl - October 19, 2025 at 09:11 PM

GC

“ Attended WELCA conventions and gatherings. She was a delegate from her congregation. We had many good visits together.



Gladys Hansen Chase - October 18, 2025 at 08:11 PM

GC

“ We met at synod and Cluster meetings. We always had a good visit.



Gladys Hansen Chase - October 18, 2025 at 05:24 PM

JC

“ JoAnn Christensen purchased the Large Basket Garden for the family of Evelyn Oftedahl.



JoAnn Christensen - October 18, 2025 at 02:21 PM

JJ

“ Jon Johnson lit a candle in memory of Evelyn Oftedahl



Jon Johnson - October 17, 2025 at 05:59 PM