



Shirley Grewe

April 29, 1931 - January 23, 2017

The funeral service for Shirley Grewe, of Verndale will be held at 2:00 p.m. on Friday, January 27, at the Central United Methodist Church in rural Verndale, with Pastor Chuck Horsager presiding. Visitation will be held on Thursday at the Schuller Family Funeral Homes' Vendale Chapel in Verndale from 5:00 until 7:00 p.m. Visitation will resume at the church on Friday from 12:30 p.m. until the time of service. Shirley Grewe was born April 29, 1931, in Wesley Hospital, Wadena, MN, to Maurice and Erma (Davis) Baker. She completed her journey to the Lord on January 23, 2017, at the age of 85. She passed away at the Staples Care Center under the gentle care of Lakewood Health System Home Care & Hospice of Staples.

Shirley graduated from Verndale High School in 1949. She married Melton Wesley Dougherty on January 4, 1950. Six children were born to this union. Shirley and Melton farmed in Wing River Township until 1974 when Shirley and the youngest two children moved to Fridley, MN, where Melton was employed as a machinist for FMC. Melton passed away in 1978.

On June 30, 1979, Shirley married Ernie Grewe and returned to the Verndale area. Shirley and Ernie farmed the Grewe homestead in Stowe Prairie Township where they tended a dairy herd, beef cattle, hogs and raised various crops.

A prolific knitter, Shirley was taught the art of knitting by her Danish-born great-grandmother Karen Davis at the age of 6. It became a life-long passion for her. In the 1980s, Shirley opened Cameo Crafts and Yarn in Verndale where she enjoyed sharing her love of knitting and crafting with a large audience.

Always an industrious spirit, Shirley had a wide range of vocational interests including working as an operator for the Verndale Telephone Exchange, Peterson-Biddick of Wadena, William's Floral of Staples, Weight Watchers, Donaldson's Department Store, shoe department, of Brooklyn Center (where she earned distinction for sales exceeding \$100,000 in 1978), and Stearns Rubber of Staples. Her favorite job, however, was working for the Jose Cole Circus managing advance ticket sales across the upper Midwest. She would laugh when she told people that she had "run away with the circus."

Shirley loved having her family around. She and Ernie delighted in their 13 grandchildren and 21 great-grandchildren. Whether they were her biological or step-grandchildren she loved them all the same. Shirley enjoyed preparing family dinners at Thanksgiving and Christmas time when she often hosted a large and extended family.

A farmer at heart, Shirley was an enthusiastic supporter of the England Prairie Pioneer Club of Verndale and looked forward to volunteering at the organization's annual show each year.

Shirley was preceded in death by her father Maurice and mother Erma; husbands Melton Dougherty and Ernie Grewe; son Ralph Dougherty; brothers John Baker and Maurice Baker, Jr.; son-in-law Randy Larson.

She is survived by her daughters Vivian Larson of Chisholm, Diane (Bruce) Malone of Verndale; sons Steve (Sue) Dougherty of Verndale, Mike (Lori)

Dougherty of Blaine, Devon (Chris Thorson) of Golden Valley; brothers Roger (Floy) Baker of Whitefish, MT, Jim (Sandy) Baker of Deer Creek; and sisters Dee Dee (Chuck) Neal of Staples, Mary (Bob) Froehlich of Champlin, Lola (Larry) Larson of Vancouver, WA. She is also survived by 13 grandchildren and 21 great-grandchildren.

Pallbearers are Dan Dougherty, Dana Dougherty, Dustin Dougherty, Mathew Larson, Beau Sarazin, Jamie Malone. Honorary pallbearer Brian Dougherty.

Burial will be in Green Lawn Cemetery in Verndale, MN.

Cemetery Details

Green Lawn Cemetery

16277 120th Street
1st Ave./ Co Rd 104 (1 mile west of Verndale)
Verndale, MN 56481

Previous Events

Visitation

JAN **26**. 5:00 PM - 7:00 PM (CT)

Verndale Chapel
9 North Farwell Street
Verndale, MN 56481
(218) 445-5191

Visitation

JAN **27**. 12:30 PM - 2:00 PM (CT)

Central United Methodist Church (N. of Verndale)
15384 Co Rd 26
Verndale, MN 56481

Service

JAN **27**. 2:00 PM - 3:00 PM (CT)

Central United Methodist Church (N. of Verndale)
15384 Co Rd 26
Verndale, MN 56481

Tribute Wall



“ *Schuller Family Funeral Homes created a Tribute Video in memory of Shirley Grewe*



Schuller Family Funeral Homes - January 25, 2017 at 03:15 PM

TB

“ *I will always remember Shirley by her wonderful smile and her beautiful artwork. I always looked forward to visiting with her whenever there was a get together. She will be greatly missed. I am thankful for those precious memories of Shirley when I was growing up.*

Tom Blaha - January 27, 2017 at 08:35 PM

LR

“ *Shirley was also so happy and had a smile for everyone.*



lisa randall - January 27, 2017 at 06:01 PM

CO

“ *Loved Shirley's yarn and craft shop, her beautiful felted hats - a beautiful talented lady.*

Carol and Dan Osborn - January 27, 2017 at 11:19 AM

BP

“ *Barry & Sandi Pratt lit a candle in memory of Shirley Grewe*



Barry & Sandi Pratt - January 26, 2017 at 11:53 PM

EF

“ *Esther And Alan Freitag lit a candle in memory of Shirley Grewe*



Esther and Alan Freitag - January 26, 2017 at 03:16 PM



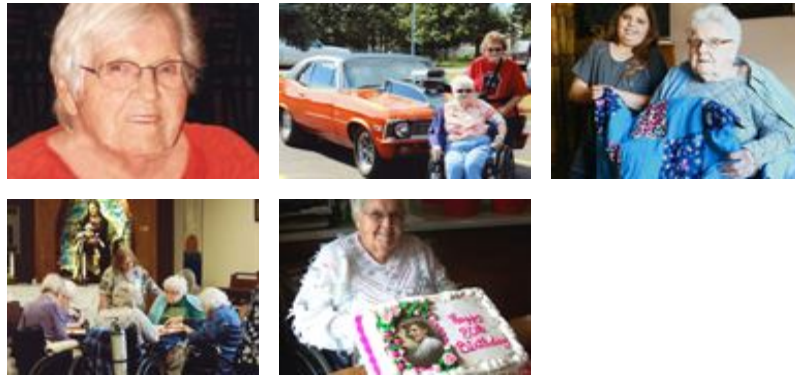
“ *Full Of Love Bouquet was purchased for the family of Shirley Grewe.*



January 25, 2017 at 09:26 PM



“ 53 files added to the album Life Tributes



Schuller Family Funeral Homes - January 25, 2017 at 03:04 PM

RM

“ Roman And Barb Moench lit a candle in memory of Shirley Grewe



Roman and Barb Moench - January 25, 2017 at 12:21 PM

JC

“ Jim And Janell Carr lit a candle in memory of Shirley Grewe



Jim and Janell Carr - January 25, 2017 at 09:45 AM

JC

Our thoughts and prayers are with Shirley's family. She was such a great lady!

Jim and Janell Carr - January 25, 2017 at 09:47 AM

JS

“ She was very crafty...there wasn't much she couldn't do....so talented...she knew her flowers...she knew right where she planted them all...kind hearted...genealogy she kept up on....told me stories about going to my mom's school and sitting by a tree eating lunch with my mom (that was cool)...knew my great-grandma.....it was privilege to know her....she will be missed...good bye Shirley...see you in heaven

Judy shultz - January 25, 2017 at 07:52 AM

DC

“ Dale And Marlene Campbell lit a candle in memory of Shirley Grewe



Dale and Marlene Campbell - January 25, 2017 at 07:29 AM

PD

“ Patty Desrocher lit a candle in memory of Shirley Grewe



Patty Desrocher - January 25, 2017 at 05:30 AM



“ Shirley was a wonderful lady, I am sure going to miss her jokes and all the stories she would tell.



Sheena Otto - January 24, 2017 at 11:36 PM

NB

“ *Neal And Leona Bowman lit a candle in memory of Shirley Grewe*



Neal and Leona Bowman - January 24, 2017 at 10:06 PM

GD

“ *George&Julie Deiss lit a candle in memory of Shirley Grewe*



George&Julie Deiss - January 24, 2017 at 08:36 PM

LM

“ *Linda McIntire lit a candle in memory of Shirley Grewe*



Linda McIntire - January 24, 2017 at 07:46 PM

SS

“ *Sincere and heartfelt sympathy.*



Sally Siegler - January 24, 2017 at 07:40 PM

JP

“ *Jerry And Kathy Peterson lit a candle in memory of Shirley Grewe*



Jerry And Kathy Peterson - January 24, 2017 at 05:02 PM

BB

“ *Barb And Bruce Brown lit a candle in memory of Shirley Grewe*



Barb and Bruce Brown - January 24, 2017 at 04:22 PM